



### Village

#### Walk back into the past

Demolition world have there own little church, theatre, water wheel, candy shop, bar, etc.... a town within a town.... sorry the bar is dry

A secrete village, people are always lost for words when they walk round the village. Peacocks and chickens, white doves, and even a water monster.... rumoured to be a distant relative of Loch Ness.

### Demolition World

If you can't find what your looking for, come see us. Often we know where the lost treasure may be found but often is the case, people see something better than they had in mind. It can be as simple as scoring just the right door or window to finding a classic hand basin for the bathroom.

#### This is a small range of our stock.

To be honest we discover things we never knew we had, and that's because it is forever changing.

We have discounted and new stock from many suppliers located all over the country.

By no means does the web site or this e brochure cover our range of stock, a glimpse at best.

Over fifteen hundred doors, hundreds of windows, too many handles and latches to count, with tiles, bricks, bath-room fixtures and much more.

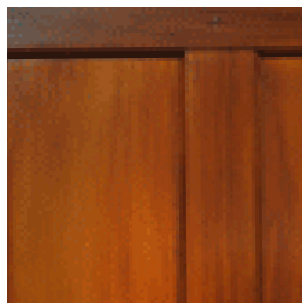
Our homes are special places, they are made up of many textures, shapes and colours. A little history, something from the past always adds a nice touch to any home.



A hundred year old lock set with wood turned handles.



Discontinued stock....





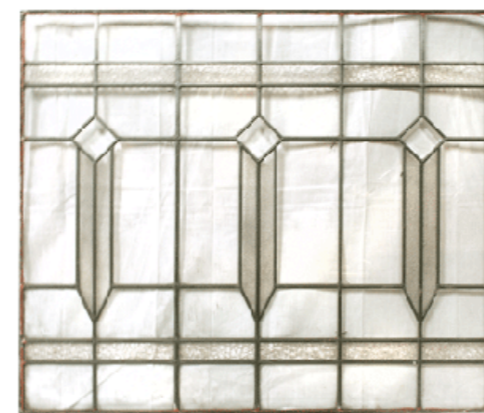
# DEMOLITION WORLD

discover a world of treasure



this stock moves fast, don't be surprised if it's gone within a few weeks.

last of the great craftsmen ..... go to recycling on our web site for more one off items.





# DEMOLITION WORLD



Our drive, come down the gravel road and turn left...

A curator of the past, Lee has a collection of old and new beautiful things.

Many people come to Demolition World looking for that something special, it's impossible to describe, but when you discover it, then you know what it is.

A little poetry perhaps.

## Contact details for Lee

Recycling treasure from the past.

Phone **03 216 2441**

Mobile **027 271 7385**

email [lee@demoworld.co.nz](mailto:lee@demoworld.co.nz)

web [www.demolitionworld.co.nz](http://www.demolitionworld.co.nz)

FaceBook

to visit Demolition World

290 Bain Street Clifton Invercargill

for instruction, follow the map.



Discover a World of Treasure